



MONTHLY MEMBERSHIP PROGRESS REPORT

District 1 J

Results as of: 05/31/2018

GMT: STEVE ANTON

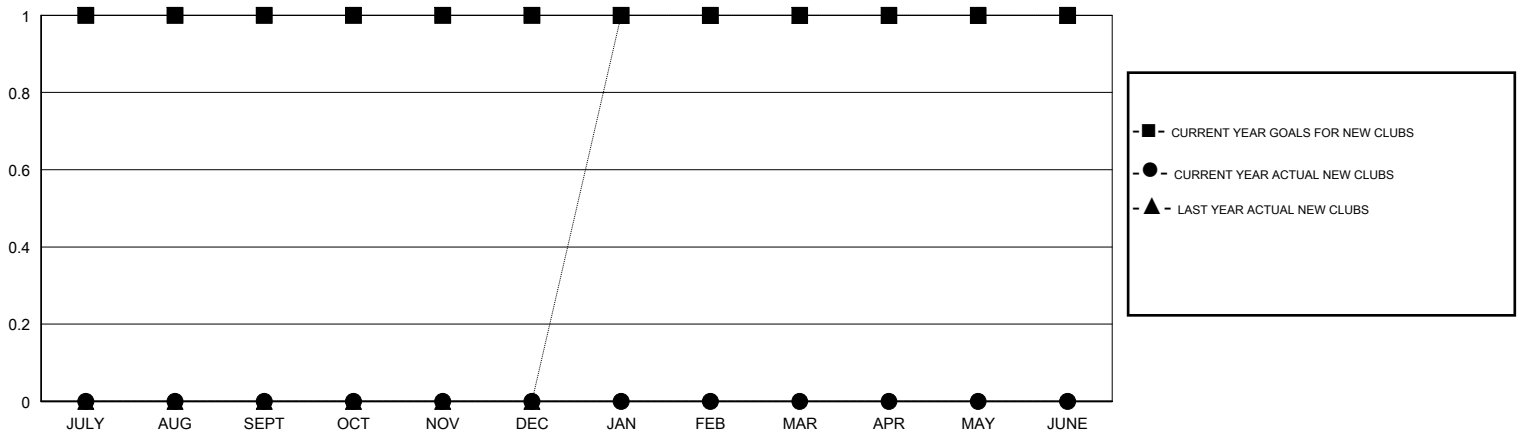
LOCATION ILLINOIS

GMT CA

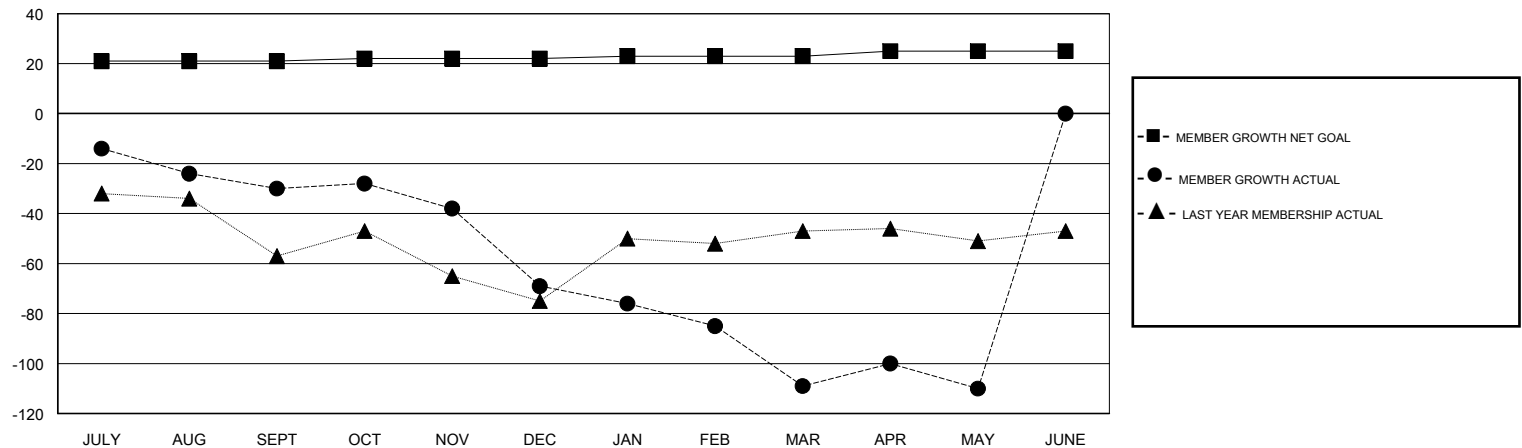
Clubs			
RESULTS FOR 2017-2018			
QUARTER	NEW CLUB GOAL	NEW CLUBS	DROPPED CLUBS
JULY/AUG/SEPT	1	0	0
OCT/NOV/DEC	0	0	2
JAN/FEB/MAR	0	0	0
APR/MAY/JUNE	0	0	0

Members			
RESULTS FOR 2017-2018			
QUARTER	MEMBER GROWTH NET GOAL	MEMBER GROWTH ACTUAL	DROPPED MEMBERS ACTUAL (including transfers)
JULY/AUG/SEPT	21	24	53
OCT/NOV/DEC	1	37	75
JAN/FEB/MAR	1	40	74
APR/MAY/JUNE	2	39	34

GOALS AND ACTUAL NEW CLUBS CUMULATIVE



GOALS AND ACTUAL MEMBERS CUMULATIVE



DROPPED CLUBS: 2	40 CLUBS OF 61 ADDED 1 OR MORE NEW MEMBERS	<u>GENDER DISTRIBUTION</u> MALE 1,698 (78.76%) FEMALE 458 (21.24%) Women Percentage Fiscal Year Goal: 10%
<u>DROPPED MEMBERS</u> DECEASED 24 CLUB CANCELLED 5 OTHER 205 TOTAL 234	CLICK HERE FOR CUMULATIVE MEMBERSHIP DATA	TOTAL FAMILY UNIT MEMBERS 158 FAMILY MEMBERS PAYING HALF DUES 81